



DRAFT

WALL PAINT - CLASSROOMS

Guideline for OSM / Office of Space Management and other University classrooms
THIS IS A TYPICAL SPECIFICATION AND MAY VARY BY PROJECT

OCT 2012

OSM, Office of Space Management, University of Toronto

Contact: Burl Crone, burl.crone@utoronto.ca, 416 - 978 - 8613

Any manufacturer products listed here are sample products; the standard itself refers to finish and performance, not manufacturer. On projects with short led times having the contractor select the manufacturer allows them to ensure that the product can meet required delivery times.

WALL PAINT

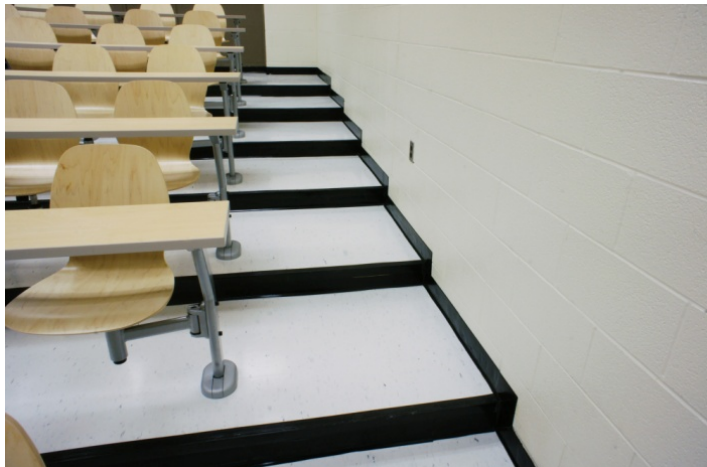
PRODUCT	Commercial grade wall paint
USE	High-Traffic (classroom) - must be washable
COLOUR	White or off white (neutral tone)
SAMPLE PRODUCTS	Warm White ICI Paints: CIL Artesian White # 20YY 83/025 This is the standard colour in WO 25/35 and in new Rotman classrooms

WALL TRIM / BASEBOARD

PRODUCT	Baseboard where wall meets floor
COLOUR	Black
SIZE	Typical is 6", may vary by project

SAMPLE PICTURES

MS 4171, summer 2012





OI 3310, 2010



DRAFT

WO 25/35, 2012

